

Welcome to the....



UNITED NATIONS
UNIVERSITY

UN in Bonn

**Working Towards
Sustainable Development
Worldwide**





UNITED NATIONS
UNIVERSITY
UNU-EHS
Institute for Environment
and Human Security



adelphi



KNOW4RR
Disaster Risk Reduction Knowledge

International Workshop:

Decision making in disaster risk
reduction across different levels

10 - 11 December 2014 in Bonn

United Nations University

Institute for Environment and Human Security

(UNU-EHS)

adelphi



UNITED NATIONS
UNIVERSITY

UNITED NATIONS UNIVERSITY

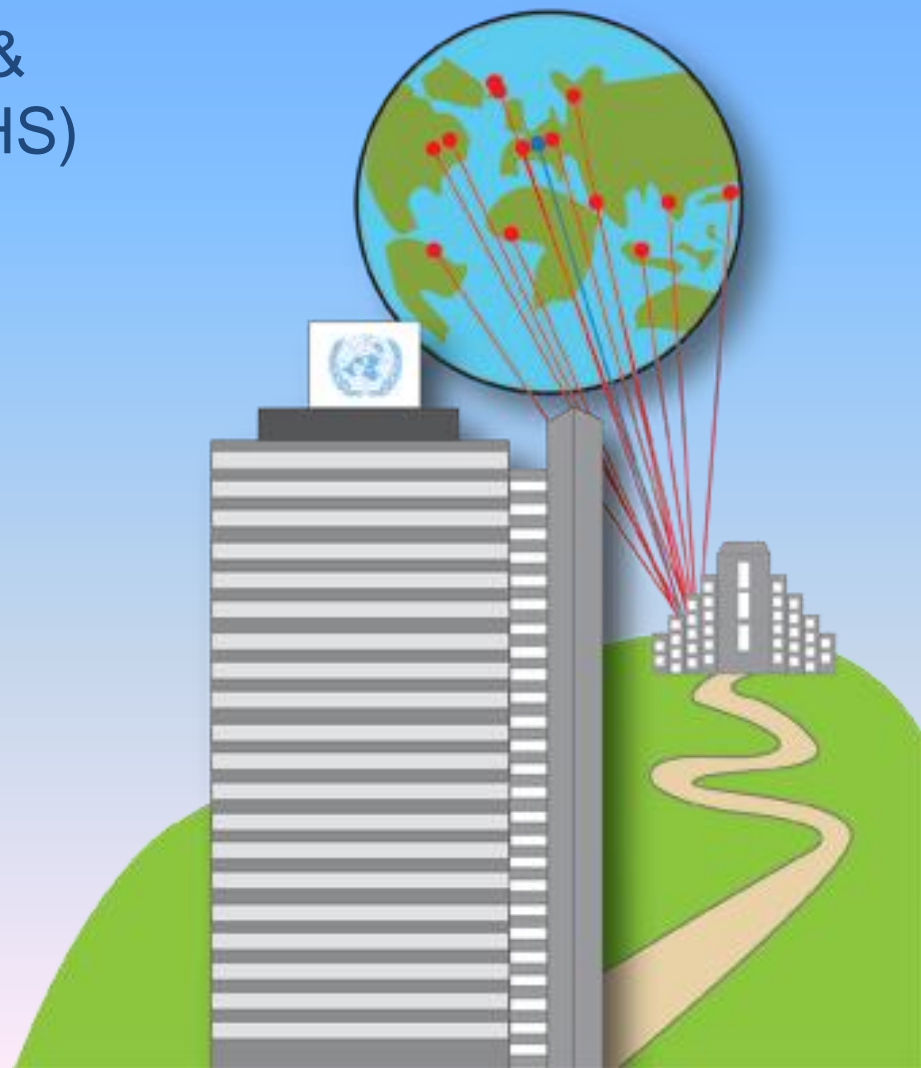
Institute for Environment &
Human Security (UNU-EHS)
Bonn, Germany

Dr. Jörg Szarzynski
Education Programme Director
Head of Section

EduSphere

*Higher Education &
Capacity Development*

UNU
BONN





Welcome note Prof. Jakob Rhyner

Vice Rector in Europe
Director Institute for Environment and Human
Security

United Nations University



KNOW4RR
Disaster Risk Reduction Knowledge

Why is information and knowledge
relevant
for decision making in
disaster risk reduction?



The Indian Ocean Tsunami 26 Dec 2004

Tsunami 2004 - Khao Lak Sunset Beach

15 s before arrival of the wave





The Indian Ocean Tsunami 26 Dec 2004



**Approx. 250.000 people died,
110.000 people were wounded,
1.7 Mio. people lost their homes**



The Indian Ocean Tsunami 26 Dec 2004

Tsunami 2004 – Northern Khao Lak Bay, Thailand



The Indian Ocean Tsunami 26 Dec 2004



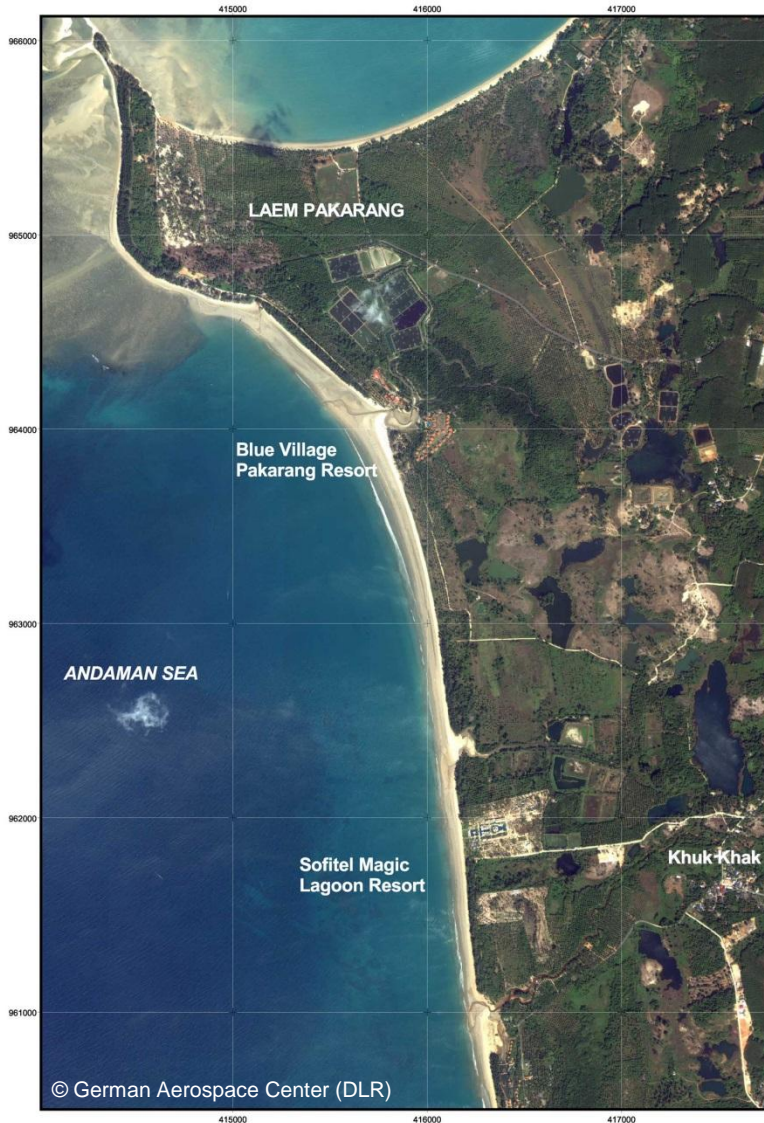
UNITED NATIONS
UNIVERSITY

THAILAND / Northern Khao Lak Bay

IKONOS - January 30, 2003 - PRE-DISASTER IMAGE

1 : 12.500

IKONOS - December 29, 2004 - POST-DISASTER IMAGE



Center for Satellite based
Crisis Information
- Emergency Mapping & Disaster Monitoring -

German Remote Sensing Data Center
German Aerospace Center

Legend

- Major Road (paved)
- Major Road (unpaved)
- Dirt Road
- Coastline before Tsunami
- Affected Area

Interpretation

The map shows the northern Khao Lak Bay, Thailand before and after the devastating Tsunami flood wave of December 26, 2004. In the northern edge the Laem Pakarang spit can be seen. The flood wave has washed away several tourist resort buildings, forest plantations and one can see how the coast lines were severely destroyed. The images were taken on January 30, 2003 and December 29, 2004, respectively. Along the shore line a strip of about 1000 m to 1500 m was washed away by the flood wave. As most parts of the Khao Lak Bay area and neighbouring beaches are of similar topographic shape it is expected that similar destruction has occurred in the surroundings.

Scale
0 250 500 750 1000 m
1 : 12.500

Projection: UTM Zone 47 N
Spheroid: WGS84
Datum: WGS 84

Data Source
IKONOS imagery provided through

CRISP
National University of Singapore

SPACE IMAGING
Visual Information. Visible Results.

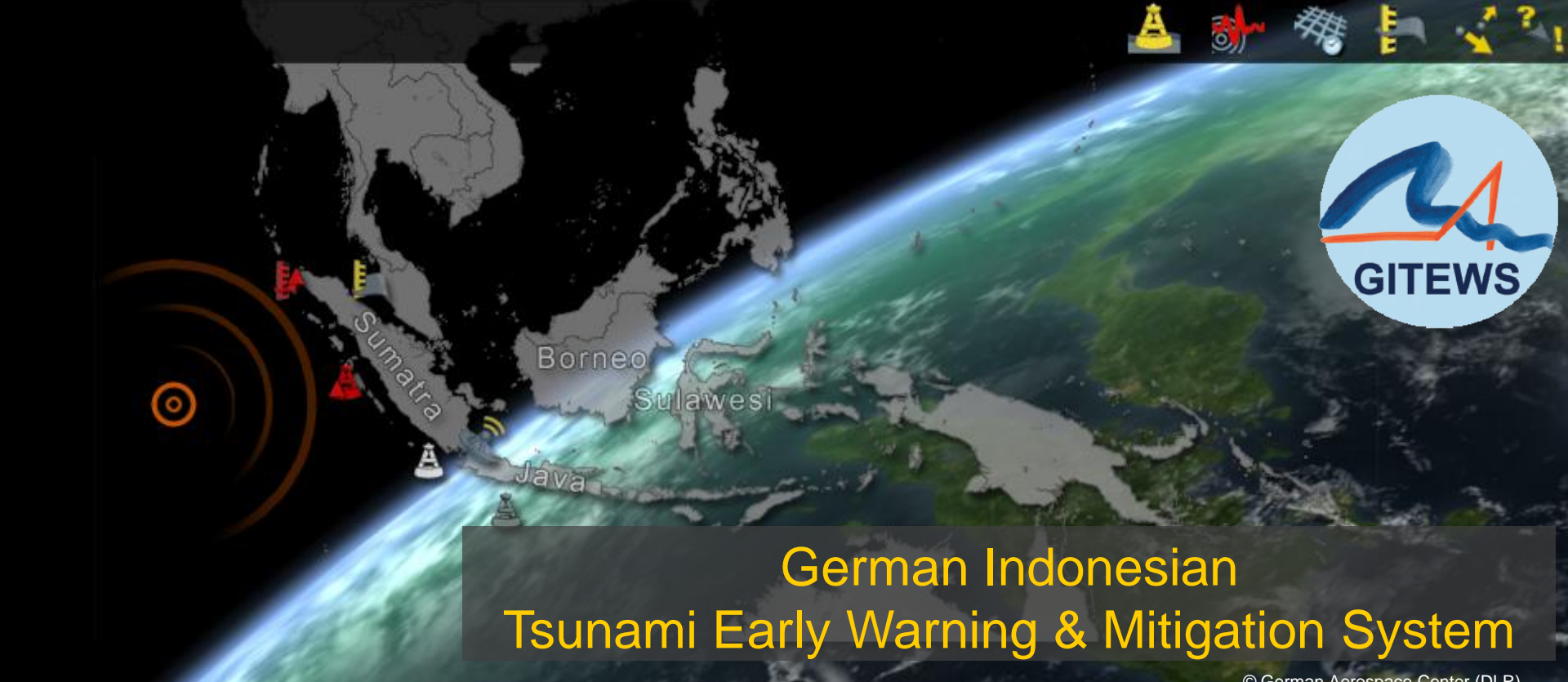


The Indian Ocean Tsunami 26 Dec 2004

© German Aerospace Center (DLR)



Damage assessment information is highly relevant to political decision makers



German Indonesian Tsunami Early Warning & Mitigation System

© German Aerospace Center (DLR)

Tsunami-Frühwarnsystems GITEWS in Indonesien

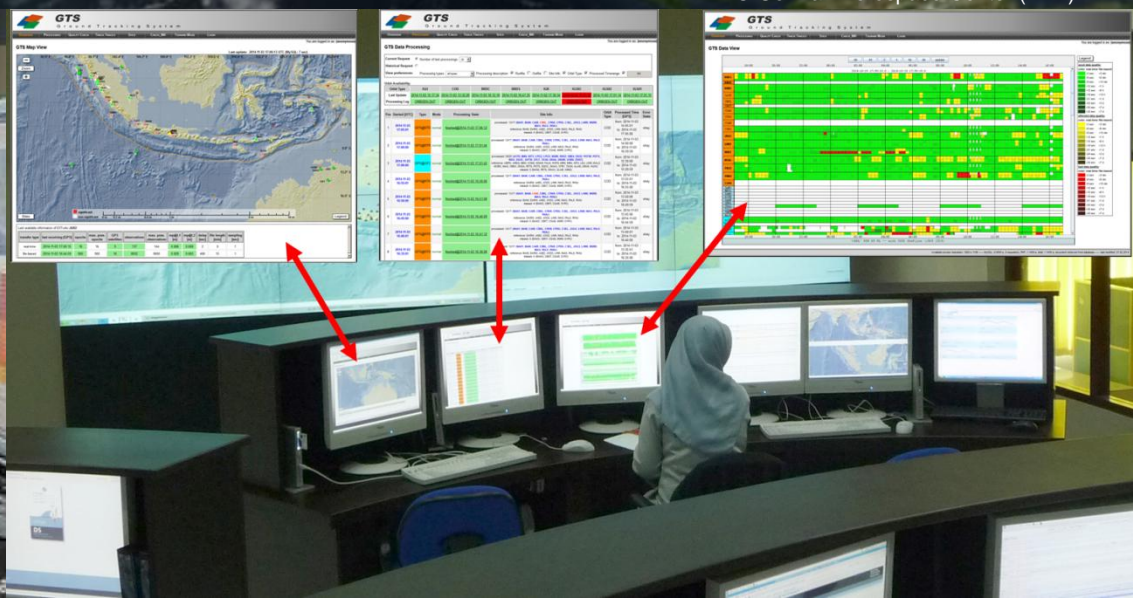


Foto: GFZ-Potsdam



Decision Support System Graphical User Interface



Thank You - Terima kasih!



UNITED NATIONS
UNIVERSITY

