

Regional Observatory of Major Risks in Provence-Alpes-Côte d'Azur (PACA)

Testing with stakeholders at different governance scales, a new multiscale and shared IKMS, for DRR decision making process in French territories

Workshop : Decision making in disaster risk reduction accross different levels

11 December 2014 - Bonn



A few words about PACA (1/2)

- **The most exposed area of France to major risks :**
 - **The most seismic region of France with the most murderous earthquake of the last century (the 1909 Provence earthquake)**
 - **High flood risk with all kinds of phenomena (slow floods / Rhône and Durance rivers) and torrential floods (coastal rivers and mountain territories) ; 80 % of the municipalities have already made a natural disaster declaration**
 - **A lot of industries (60 Seveso sites) and nuclear installations**



A few words about PACA (2/2)

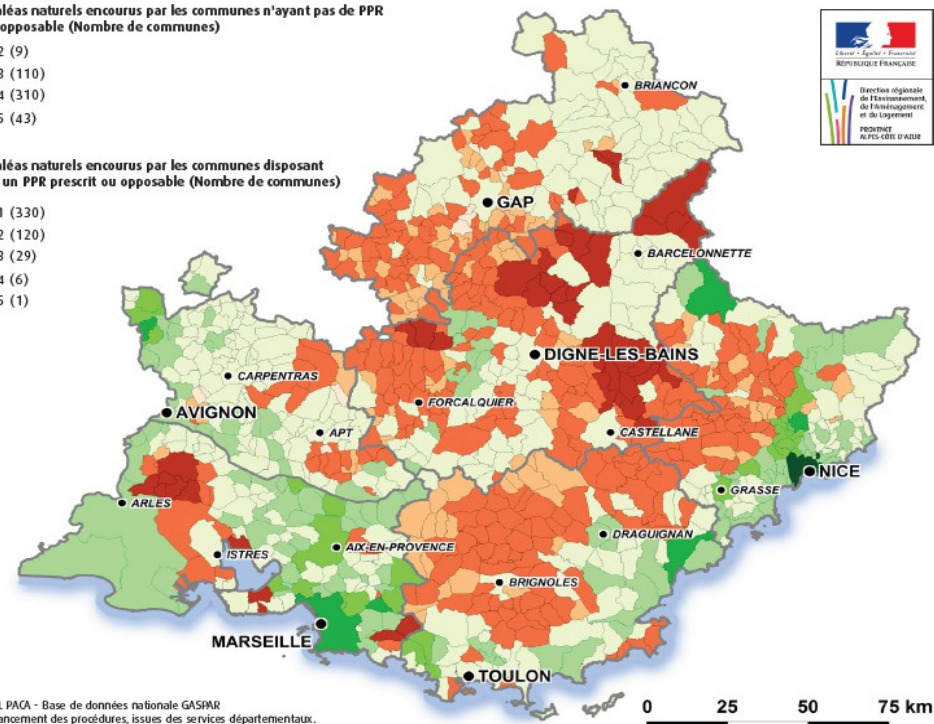
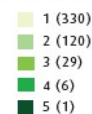
- All of the municipalities (963) have been confronted with at least one natural risk
- 15 % of the municipalities are exposed to all 5 hazards (flood, earthquake, forest fire, avalanche, landslide) - more than a million people.
- 67 % of the municipalities are exposed to 4 hazards.

Données janvier 2014

Nombre d'aléas naturels encourus par les communes n'ayant pas de PPR prescrit ou opposable (Nombre de communes)



Nombre d'aléas naturels encourus par les communes disposant d'au moins un PPR prescrit ou opposable (Nombre de communes)



➔ A strong need of knowledge development and sharing

➔ Everybody should become an player of risk prevention at every scale

History (1/3)

A strong long-term partnership between three regional partners

La Région Provence-Alpes-Côte d'Azur

La Direction Régionale de l'Environnement, de l'Aménagement et du logement (DREAL)
Provence-Alpes-Côte d'Azur

Le Bureau de Recherches Géologiques et Minières (BRGM)



Ten years of progressive development

2001 – 2006 : Collection and organisation of risk data

2007 – 2013 : Data sharing, tools and production ; the first structuring of the observatory

2014 – 2020 : An innovative observatory project

History (2/3)

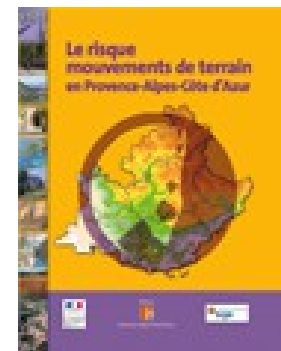
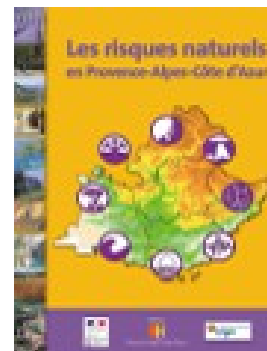
Ten years of progressive development

2001 – 2006 : Collection and organisation of risk data

2007 – 2013 : Data sharing, tools and production, structuring of an observatory

2014 – 2020 : An innovative observatory project

- Local level risk inventories
- Regional database consolidation
- Geo-referencing of data
- Educational tool publication



History (3/3)

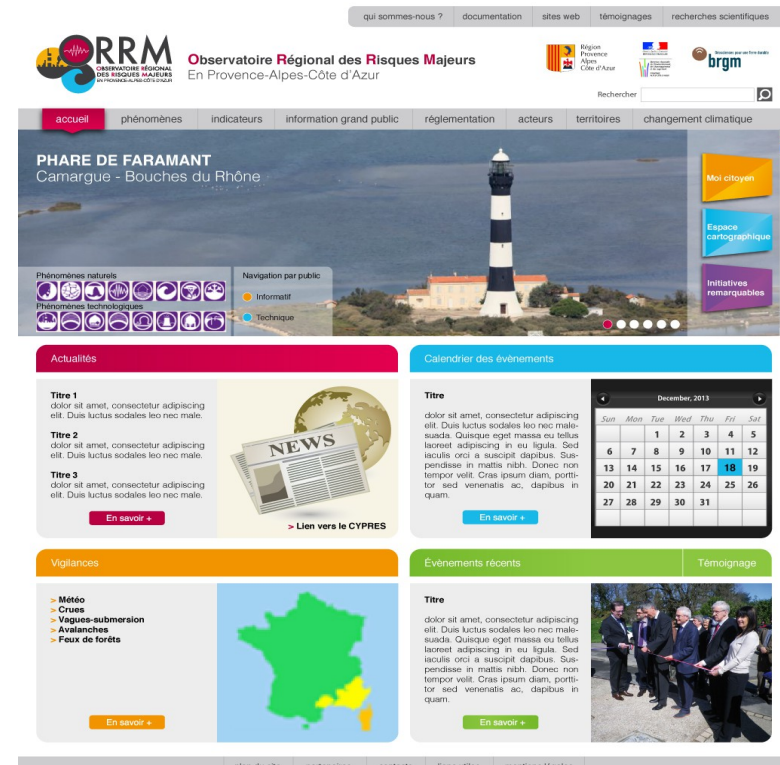
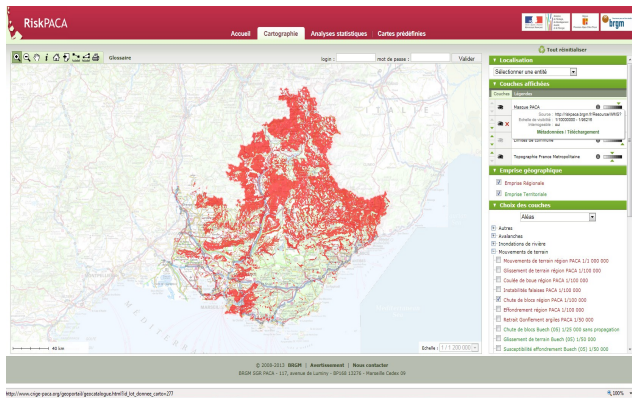
Tea years progressive development

2001 – 2006 : Collection and organization of risk data

2007 – 2013 : Data sharing, tools and development ; initial structuring of the observatory

2014 – 2020 : An innovative observatory project

- Interactive map
- Web site
- Structuration of the observatory



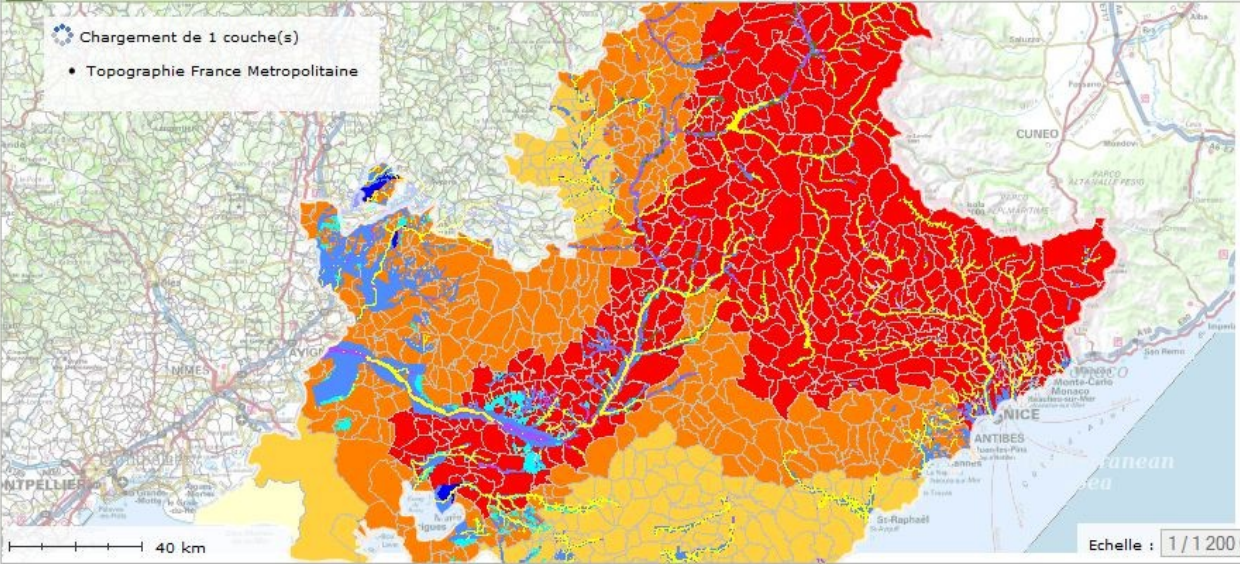
Glossaire login : mot de passe : Valider

Tout réinitialiser

Topographie France Métropolitaine

Chargement de 1 couche(s)

- Topographie France Métropolitaine



Echelle : 1/1 200 000

Emprise géographique

- Emprise Régionale
- Emprise Territoriale

Choix des couches

Aléas

- Autres
- Avalanches
- Inondations de rivière
 - Atlas des Zones Inondables (AZI) en PACA validé 1/25 000
 - Inondation Pays A3V (04) 1/50 000
 - Cartographie de l'aléa inondation de l'Arc 1/2 500 (13)
- Mouvements de terrain
- Séismes
 - Aléa sismique probabiliste PACA
 - Zones d'amplification de l'aléa sismique régional sur la Durance 1/50 000 (04)
- Tous phénomènes

Observatory aims (1/2)

Federate regional players (State, Region, collectivities associations, industrials, insurances, citizens...) and knowledge sharing :

- Involving every citizen in risk prevention
- Better observation for better action (needs update and territorial changes)



Observatory aims (2/2)

Better observation for better action

- Helping decision making at different levels
- Knowledge improvement
- Risk exposure information -best practice promotion for risk prevention
- Initiating and supporting: innovative projects, exemplary approaches
- Developing a risk-culture mindset
- Better risk prevention visibility: facilitating exchange between players ; improving anticipation and action
- Partnership development: improving our impact and performance (ex : ONRN – ORRM PACA / national observatory – local observatory)

Short-term priorities

Increasing the visibility of the ORRM PACA

Structuring governance

Partnership Development

« Moi Citoyen » The 1st regional web tool for Prevention information

Consolidating and distributing Post-Event return of experience

Decision making support: Key regional Indicators



Governance



Success conditions :

- A long-term partnership
- Shared objectives
- A pragmatic and progressive process
- Open governance

Structure :

Strategic committee (SC): DREAL – Région – BRGM

Steering committee : SC and 3 players groups / Partners, Technical & scientific stakeholders, users

Technical working groups (TWG)

- Research and innovation
- Data production
- Indicators
- Information and valorisation

First Steering committee meeting by March 2015

First TWG meetings in 2015

« Moi Citoyen »

The 1st regional web tool for Prevention information



qui sommes-nous ? documentation sites web témoignages recherches scientifiques

RRM Observatoire Régional des Risques Majeurs
En Provence-Alpes-Côte d'Azur

Region Provence Alpes Côte d'Azur

Rechercher

accueil phénomènes indicateurs information grand public réglementation acteurs territoires changement climatique

PHARE DE FARAMANT

Camargue - Bouches du Rhône

Moi citoyen

Espace cartographique

Initiatives remarquables

Phénomènes naturels

Phénomènes technologiques

Navigation par public

- Informati
- Technique

Actualités

Calendrier des événements

Titre 1

dolor sit amet, consectetur adipiscing elit. Duis luctus sodales leo nec malesuada. Quisque eget massa eu tellus laoreet adipiscing in eu ligula. Sed iaculis orci a suscipit dapibus. Suspendisse in mattis nibh. Donec non tempor velit. Cras ipsum diam, portitor sed venenatis ac, dapibus in quam.

Titre 2

dolor sit amet, consectetur adipiscing elit. Duis luctus sodales leo nec malesuada. Quisque eget massa eu tellus laoreet adipiscing in eu ligula. Sed iaculis orci a suscipit dapibus. Suspendisse in mattis nibh. Donec non tempor velit. Cras ipsum diam, portitor sed venenatis ac, dapibus in quam.

Titre 3

dolor sit amet, consectetur adipiscing elit. Duis luctus sodales leo nec malesuada. Quisque eget massa eu tellus laoreet adipiscing in eu ligula. Sed iaculis orci a suscipit dapibus. Suspendisse in mattis nibh. Donec non tempor velit. Cras ipsum diam, portitor sed venenatis ac, dapibus in quam.

En savoir +

> Lien vers le CYPRES

December, 2013						
Sun	Mon	Tue	Wed	Thu	Fri	Sat
		1	2	3	4	5
6	7	8	9	10	11	12
13	14	15	16	17	18	19
20	21	22	23	24	25	26
27	28	29	30	31		

En savoir +

Vigilances

- Météo
- Crues
- Vagues submersion
- Avalanches
- Feux de forêts

En savoir +

Evènements récents

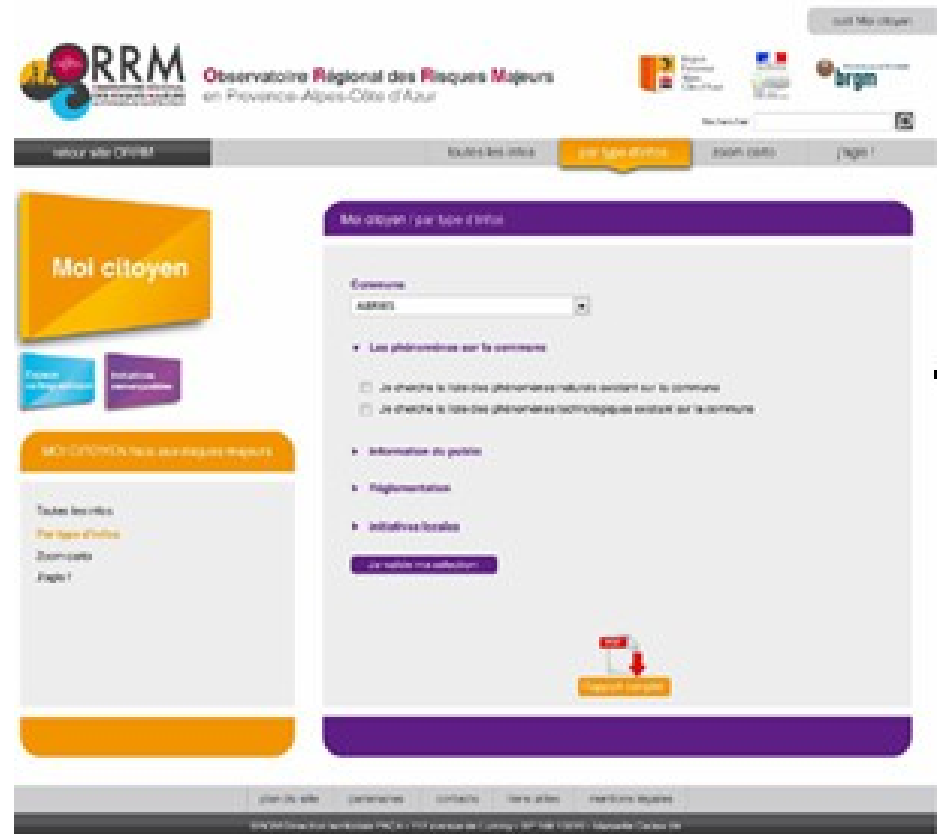
Titre

dolor sit amet, consectetur adipiscing elit. Duis luctus sodales leo nec malesuada. Quisque eget massa eu tellus laoreet adipiscing in eu ligula. Sed iaculis orci a suscipit dapibus. Suspendisse in mattis nibh. Donec non tempor velit. Cras ipsum diam, portitor sed venenatis ac, dapibus in quam.

En savoir +

Témoignage

plan du site partenaires contacts liens utiles mentions légales



RRM Observatoire Régional des Risques Majeurs
en Provence-Alpes-Côte d'Azur

Mon Profil / que faire d'infos

Expériences

adresse

Les phénomènes sur la commune

Je souhaite la liste des phénomènes naturels existant sur la commune

Je souhaite la liste des phénomènes technologiques existant sur la commune

Informations au public

Réglementations

Initiatives locales

Je valide ma sélection

Mon profil

Accueil

Me connecter

Mon profil

Accueil

Me connecter

RRM Observatoire Régional des Risques Majeurs
en Provence-Alpes-Côte d'Azur

Citizens : players for their own information and knowledge

Experience returns



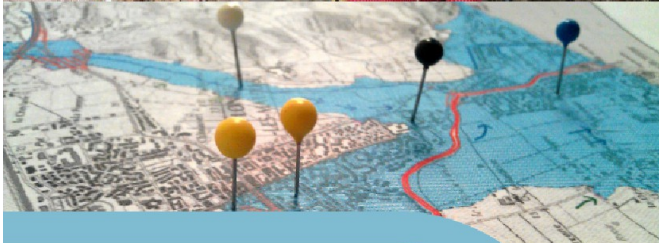
Floods in the Var – January 2014 (3 reports)

Earthquake in the Alpes – April 2014 (1 report, 1 poster, 1 article)

Floods in the Var – November 2014 (in progress)



Retour d'expérience sur les inondations du département du Var les 18 et 19 janvier 2014
Volet 2 - « Conséquences et examen des dommages »
Septembre 2014



MERCREDI 3 DÉCEMBRE 2014 | 14H30
PONTIN, SARRES-SUR-BOIRE, BONDON, RENVERIE, MALLERYS

**SÉISME EN UBAYE
DU 7 AVRIL 2014**

RESTITUTION
DU RETOUR D'EXPÉRIENCE
DE 3 MISSIONS POST-SISMQUES

DÉCOUVREZ LES ENSEIGNEMENTS
ET CARACTÉRISTIQUES DE CE SÉISME

INTÉRIEUR - EFFETS SUR LE TERRITOIRE, COORDONNE
PAYSAGE, DES DOMMAGES
RECONSTRUCTION, COMMUNICATION ET GESTION DE CRISE

ENTRÉE GRATUITE
COCKTAIL

**SÉISME DE L'UBAYE
7 avril 2014**

Rapport de retour d'expérience
Réf. BRGM/RP-63789-FR et
DREAL/D-0037-2014-SPR-URNM
Septembre 2014

**Séisme en Ubaye du 7 avril 2014
(département des Alpes de Haute Provence - France)**

De la nécessité de développer l'information préventive

la région loin d'être à l'abri !

MERCREDI 3 DÉCEMBRE 2014 | 14H30

Experience returns

Participative observation and governance

A web tool is developing
to collect ground data
during an event



The screenshot shows the ORRM website interface. At the top, there is a navigation bar with the ORRM logo and the text 'Observatoire Régional des Risques Majeurs En Provence-Alpes-Côte d'Azur'. Below this, a main header features a large image of the 'PHARE DE FARAMANT' in Camargue - Bouches du Rhône. The dashboard is divided into several sections: 'Actualités' (News) with a 'NEWS' icon, 'Calendrier des événements' (Event calendar) with a calendar grid, 'Vigilance' (Vigilance) with a map of France, and 'L'actu' (The act) which is highlighted with an orange border and contains a photo of a group of people. An orange arrow from the text on the left points to the 'L'actu' section.

Regional indicators

- **Aims**
 - Follow risk level changes
 - Performance measurement: our regulation and actions
 - Decision making assistance (action prioritisation)
- **National Observatory of Natural Risks (ONRN) Precious help for experimental cross-analysis**
 - Providing an added-value to the national, reliable, homogeneous information contained in ONRN indicators (exposure, loss records and prevention projects).
 - Giving a national diagnosis method on a rapidly changing situation.
 - Drawing conclusions through national information and helping contribute to risk prevention management and prioritisation issue

Regional indicators

WITHIN A GIVEN AREA

Study driven at the municipality scale

Exposure

Population and firms

⇒ *Identify the most exposed municipality within the given area*

Loss experience

Total and mean cost claims, claims frequency, claims ratio, Natural Disaster Declaration Number

⇒ *Identify municipalities with high loss experience*
⇒ *Analyse loss experience of identified exposed municipalities*

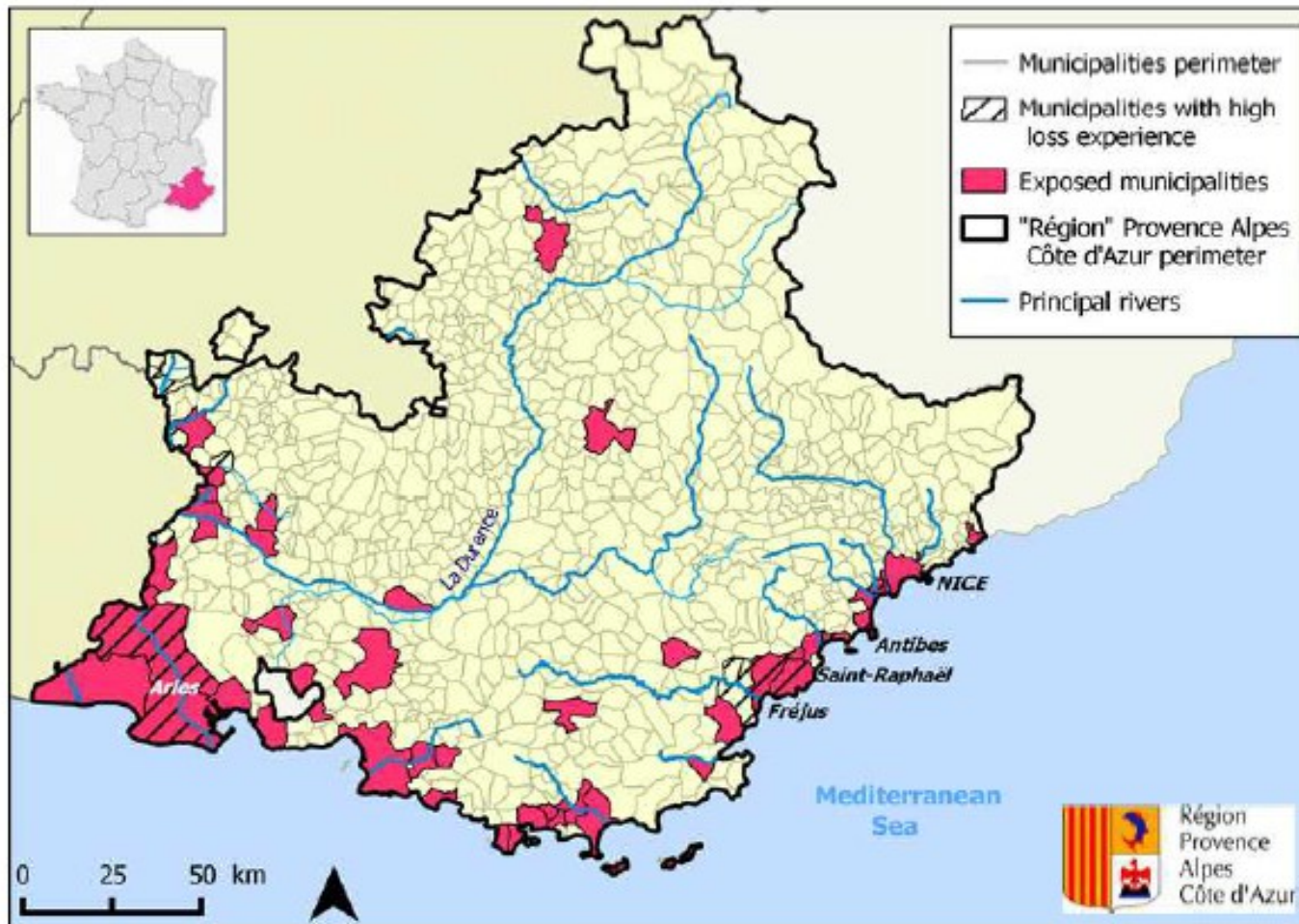
Prevention

*Flood Risk Prevention Plan (PPRi),
Flood Prevention Action Programme (PAPI)*

⇒ *Confront identified municipalities (exposed and/or with high loss experience) with prevention public policy instruments*

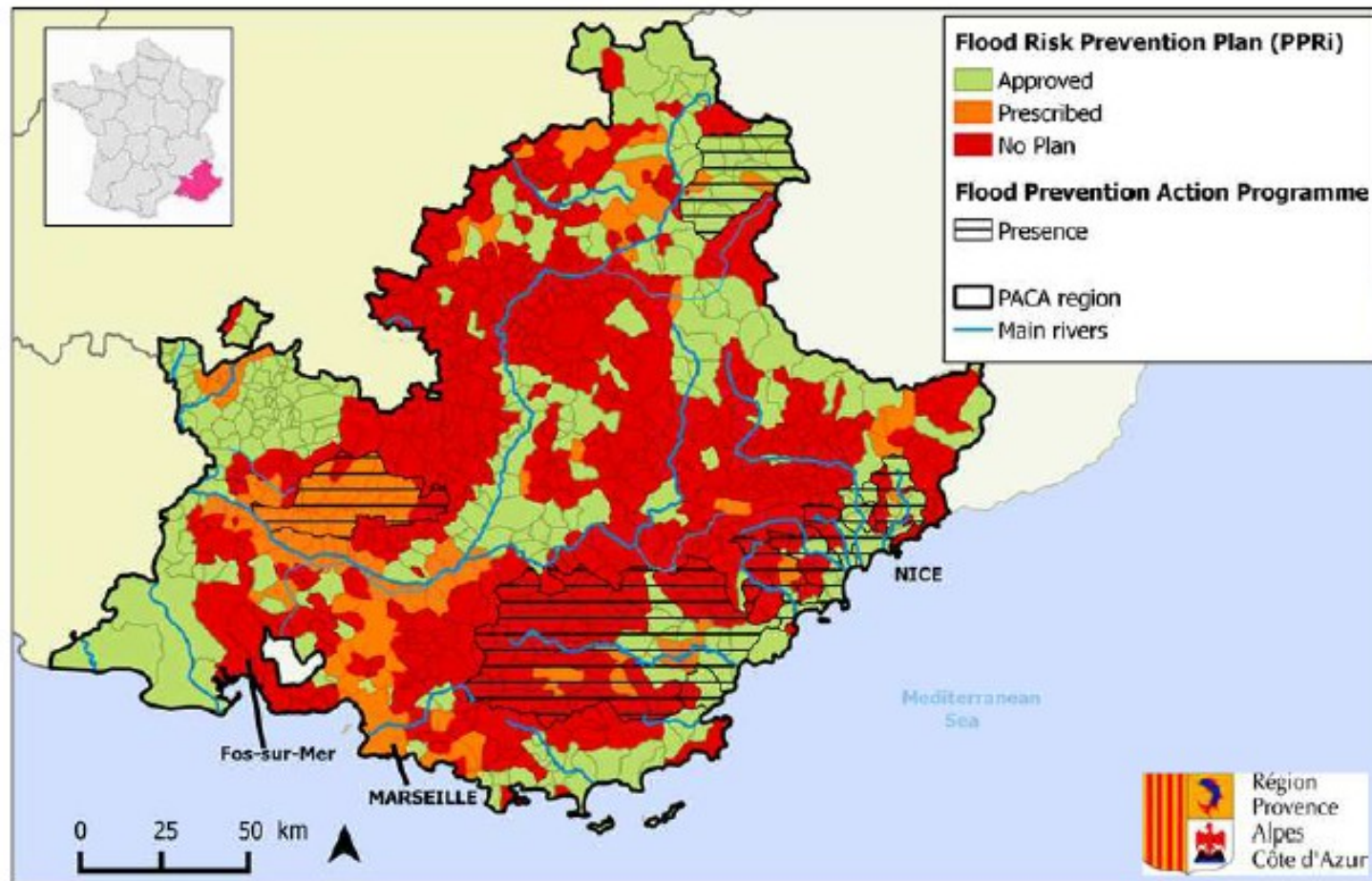
Regional indicators

Identification of municipalities characterized by **high exposure** and/or **high loss experience** within the given area.



Regional indicators

Observation of the development of flood risk prevention tools



Your attention was very much appreciated!

Special thanks to :

Roland Nussbaum – MRN

Patrick Pigeon – Université de Savoie

Hervé Champion and Nancy Spinousa – Région PACA

**Ghislaine Verrhiest-Leblanc, Jean-Luc Bussière et Séverine Laporte –
DREAL PACA**

Nathalie Marçot, Carola Mirgon et Claire Arnal – BRGM

**<http://observatoire-regional-risques-paca.fr>
observatoire-risques@brgm.fr**