

# Nuclear Safety Organisation and Stakeholder Involvement in France



*Christophe XERRI*  
*Nuclear Counsellor*

United Nations University  
December 20th 2013

# Independence of nuclear safety



Parliament - OPECST



5 Ministries

Groupe Permanent Expert  
32 meetings



Technical support  
Expertise

80 M Euros  
592 Technical notices



120 M Euros  
40% of budget

Research

2093 inspections



Other Licensees



# The road towards independance

Independance by legal organization

Independance by technical knowledge

Independance by transparency

Immediately after the accident, ASN launched:

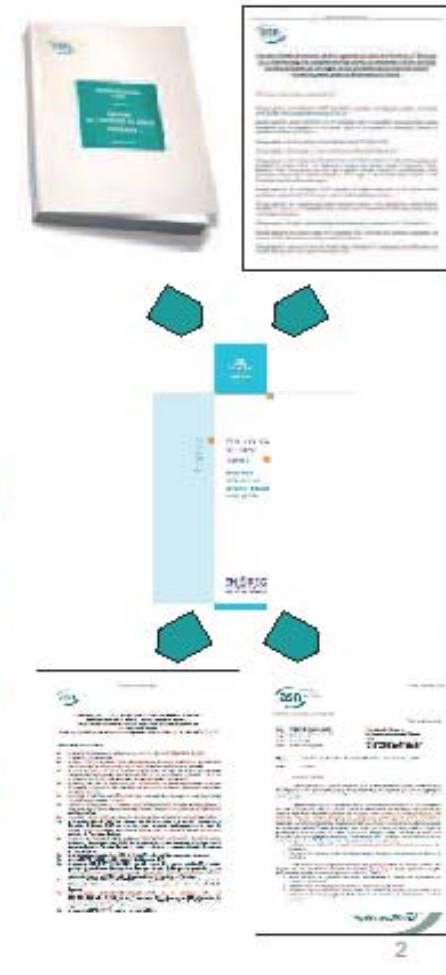
- ❑ A campaign of **targeted inspections**
- ❑ A **“stress test” analysis** of the safety of nuclear facilities, performed with the technical support of IRSN
  - complies with the request from the Prime Minister (**23<sup>rd</sup> March 2011**) and with the European Council conclusions (**24<sup>th</sup> and 25<sup>th</sup> March 2011**)
  - is a complementary safety assessment, a complementary approach to the continuous improvement process of safety pursuant to the law and overseen by ASN (periodic safety reviews and integration of operating experience feedback)
  - covers 150 nuclear installations
  - covers:
    - extreme natural events
    - loss of the ultimate heat sink or loss of electrical power
    - severe accident management
  - addresses also **human factors**



## Assessment milestones

### Stress tests assessment

- 3<sup>rd</sup> January 2012: **ASN's formal report and opinion** about stress tests
- January-April 2012 : **European peer review**
- 26<sup>th</sup> June 2012: ASN has issued:
  - **Legally binding prescriptions to EDF on improvements** to be implemented:
    - 19 resolutions with around 40 requirements each
    - Deadlines from 2012 up to 2018 → *implementation of the safety improvements as soon as possible, not waiting for the next PSRs (EU-peer review recommendation)*
  - Letter signed by the ASN's DG with **41 additional requests** to EDF



## The Local Information Committees

First CLI established in 1981

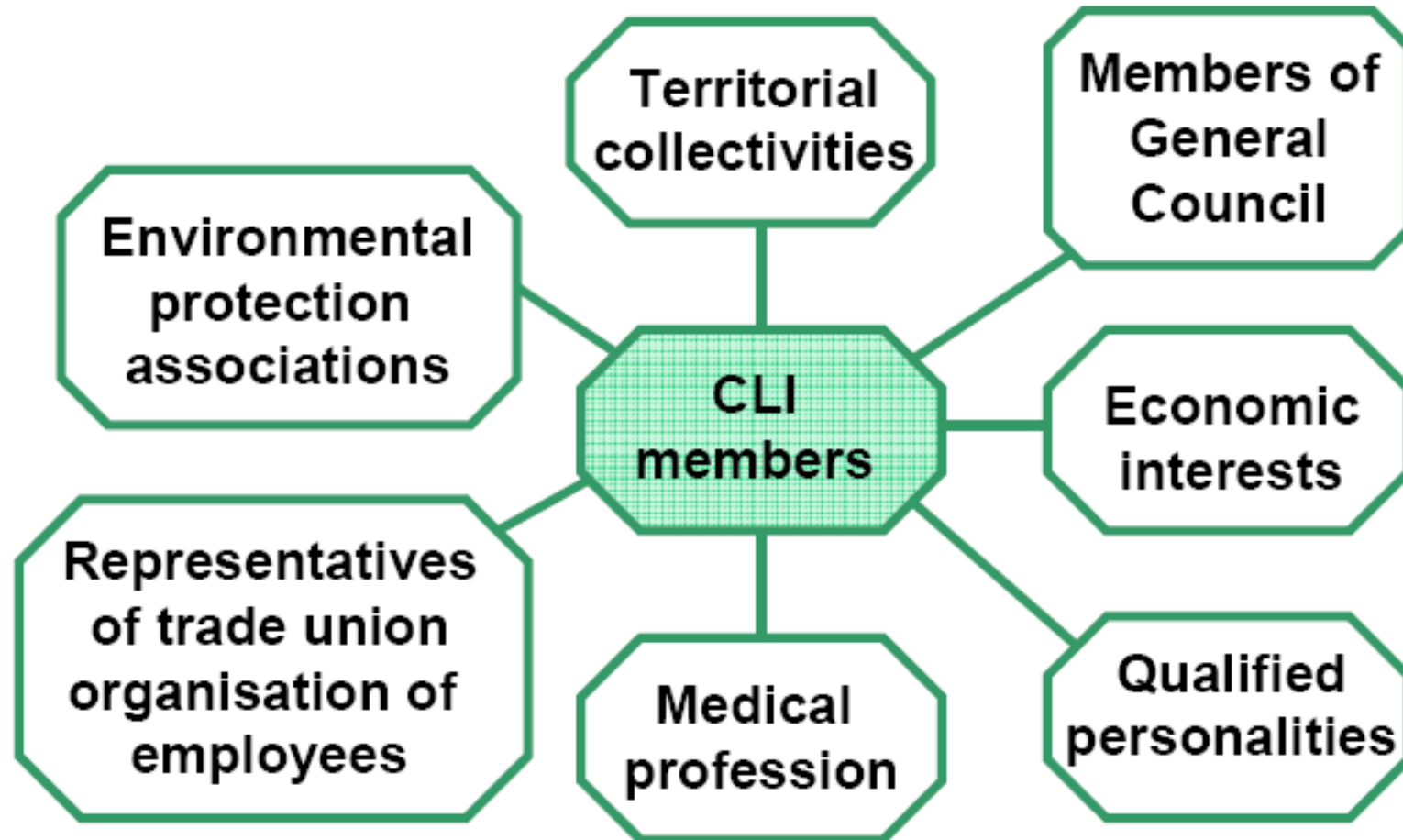
Became a legal requirement in 2006 (act on Nuclear Transparency)

- The CLI can conduct expertise, epidemiological studies, measurements and analysis
- The CLI receive, from the licensee or the State, all the information and documents needed
- The CLI is informed of any incident or accident
- The CLI is consulted for any project related to INB (this consultation is mandatory on decree authorising creation of installation and its modifications and on environmental prescriptions)
- The CLI widely disseminates the results of its work in a form accessible to the greatest number of stakeholders





# Composition





## The work of the CLI

*- Organization of a visit or a conference every two years.*



*- Studies or expertise at the request of members on specific topics (example: Study protocol groundwater abstraction and the detection of a possible lamination to Tritium levels measured)*

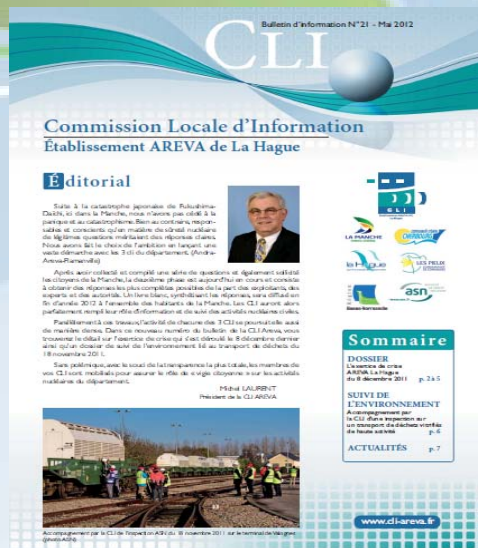
# CLI

CLI de LA MANCHE

# The work of the CLI

# Commission Locale d'Information

- Three general meetings per year.
- Regular visits to sites



## The tools of communication:

- Two information leaflets per year and per CLI
- Regularly updated websites
- Four newsletter per year
- Reactive communication with local media



CLI de LA MANCHE





# French Nuclear Panorama



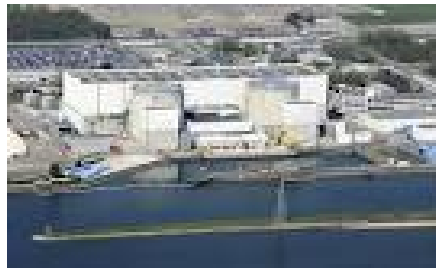
**La Hague  
Reprocessing plant**



**MELOX - MOX fuel  
fabrication plant**



**MARCOULE – CEA – R/D lab**



**Fessenheim NPP**



**Paluel NPP**



**EPR Flamanville NPP**



**ANDRA Geological disposal lab**



**Open door – Public Consultation  
by law and by choice**