



## **Progress and Challenges to Implement SDGs in the Asia-Pacific**

Workshop on Multi-stakeholder Partnerships for the SDGs Implementation in Asia and the Pacific

# Many countries in Asia Pacific push forward integration of SDGs in National Policies and Development Plans

## Integrating SDGs into National Policies and Development Plans

### SDGs Integration



- A number of countries integrate SDGs in national policy priorities;
- Some countries have established their own SDGs Goals adapted to national contexts

### Coherence with MDGs policies



- A number of countries build SDGs implementation mechanisms on MDGs mechanisms

### Policy-wise Working Groups



- A number of countries have established a head planning office (in most cases, Heads of State's Office) and thematic working groups to discuss concrete plans

# Counties adopt different types of multi-stakeholder dialogue platforms

## Types of multi-stakeholder platforms

**Government-UN coordination for decision-making, implementation and monitoring**

- Government office and UNRC/UNCT jointly plans national priorities and SDGs implementation

**Government-UN-Civil Society coordination for decision-making, implementation and monitoring**

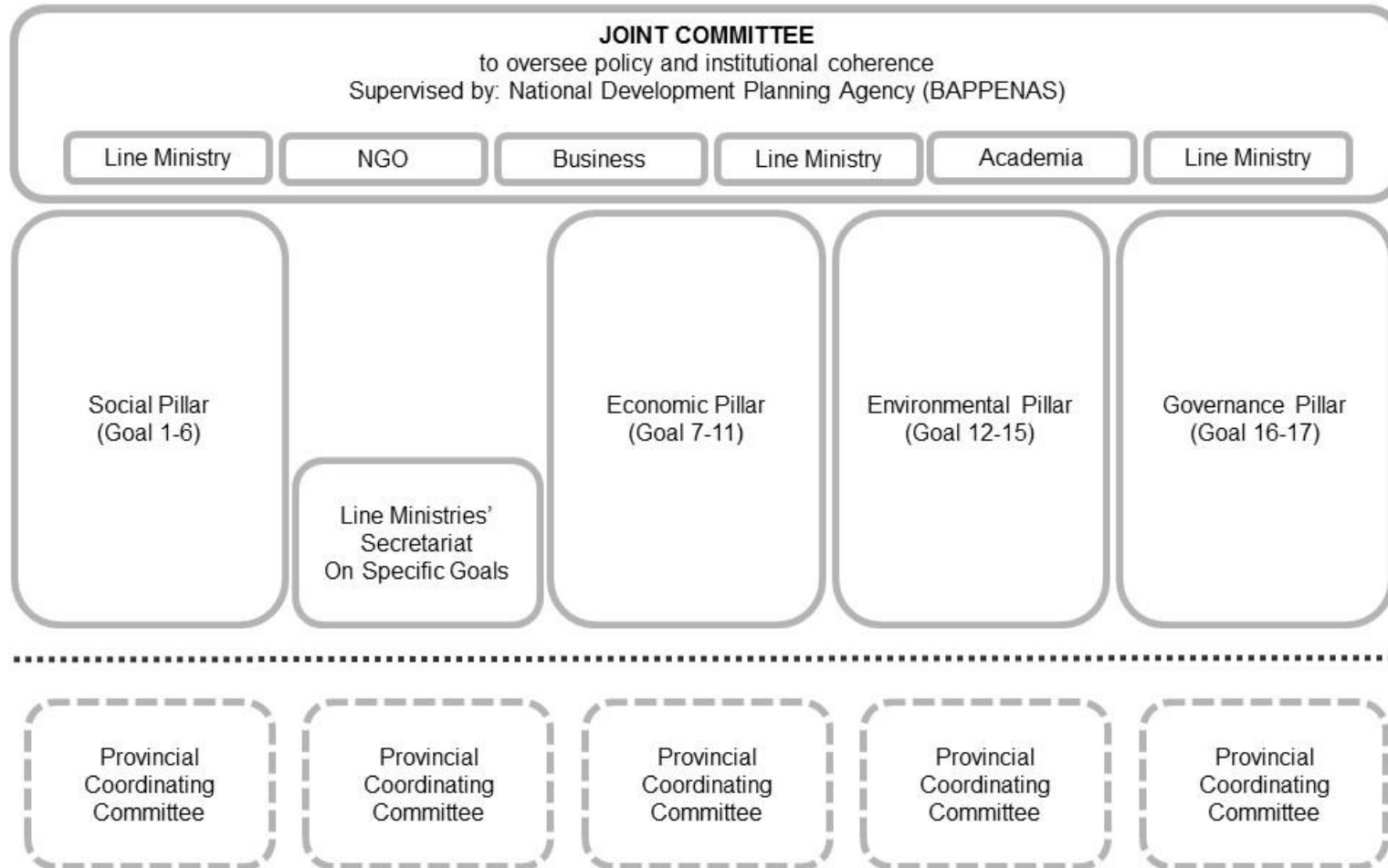
- Civil Society Organizations join in the decision-making body

**Government Decision-making body + UN-Civil Society Working Groups for policy inputs**

- Government has an independent decision-making body for SDGs planning and implementation, where UN and CSOs make inputs

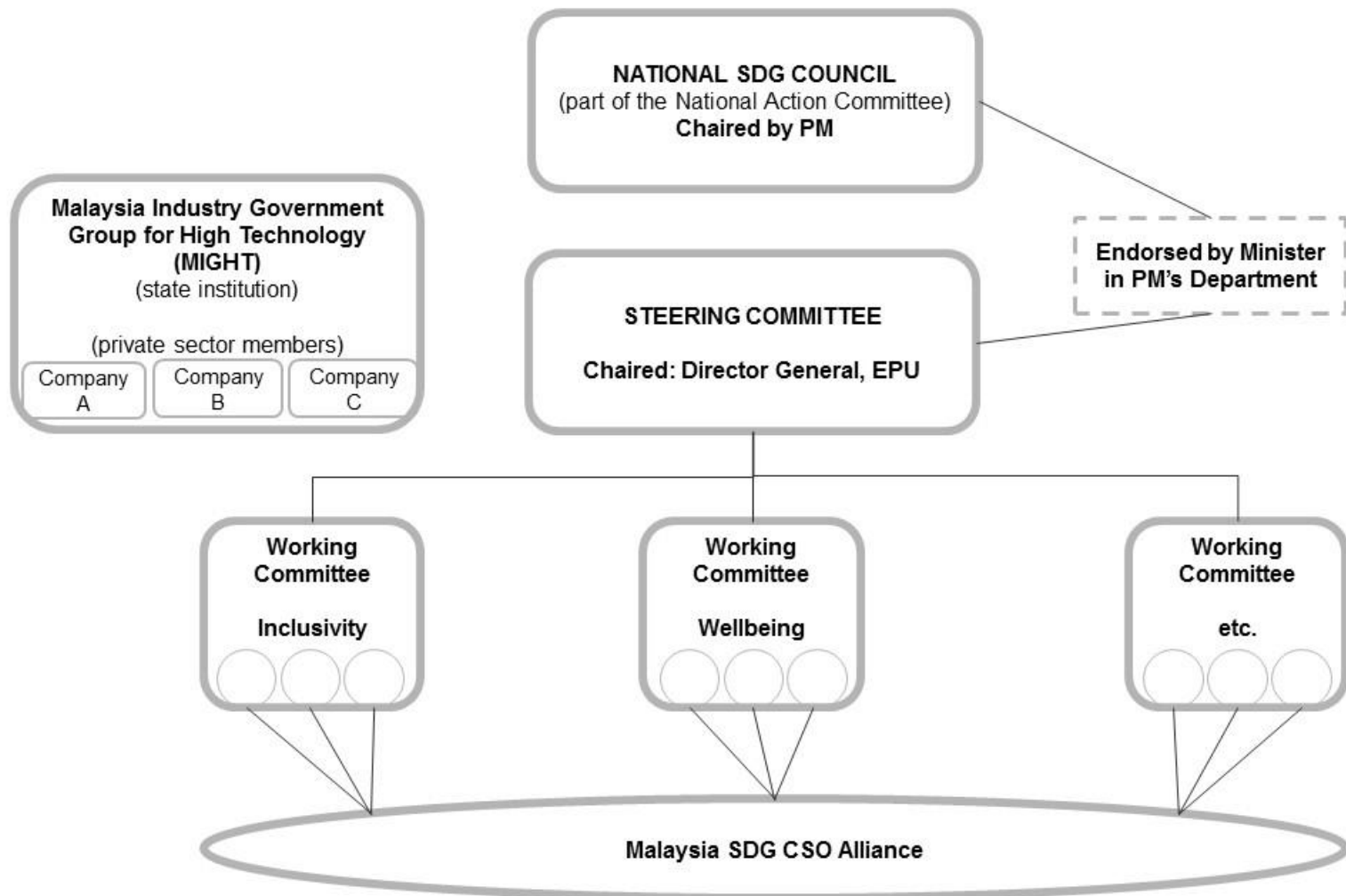
# In Indonesia, Joint Committee comprises of the Government, NGOs, UN, Business and Academia

## SDG institutional framework, Indonesia



# In Malaysia, CSO Alliance participate in Working Committees to make policy inputs

## Government's institutional framework and Multi-stakeholder Partnerships, Malaysia



# Some common challenges have been identified in terms of multi-stakeholder partnerships

## Challenges for multi-stakeholder partnerships

✓ Insufficient understanding on SDGs by line ministries

✓ Difficulty spreading SDGs for local players including local governments

✓ Insufficient capacity of CSOs to make policy inputs

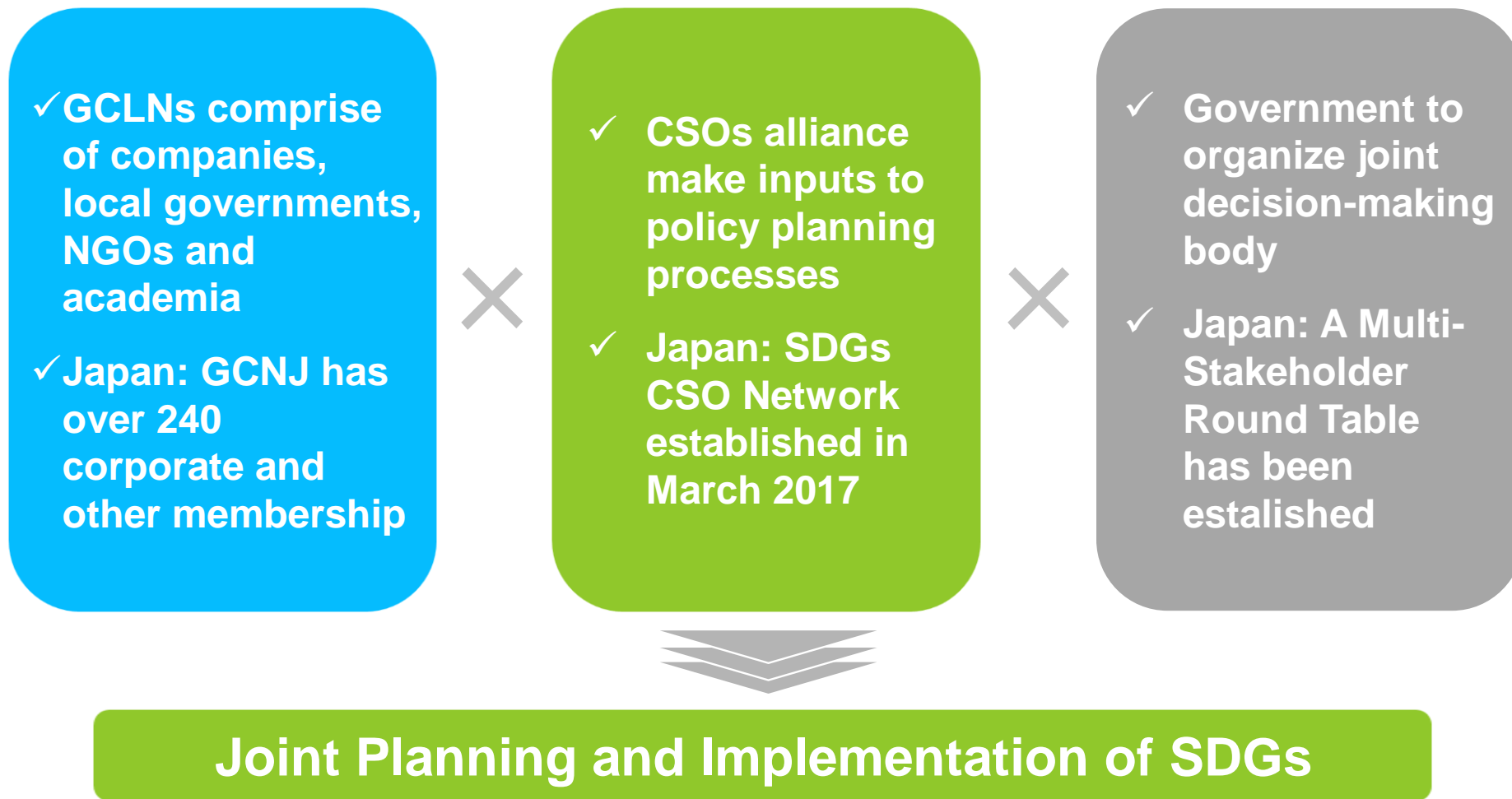
✓ Mistrust by government of partnering with CSOs

✓ Business organizations not yet active on or familiar with SDGs

✓ Insufficient awareness of SDGs by media and general public

# Global Compact Local Networks (GCNJ) play important role in some countries to catalyse Government and other entities

## Global Compact Local Networks



# Speaker

## Office of CSR and SDGs Initiatives



### **Kazuo Tase**

Director  
Office of CSR and SDGs Initiatives

14 years of experience in Japanese Diplomatic Service and 10 years of serving as a United Nations official.

#### Key Achievements

- Management of the UNTrust Fund for Human Security
  - The largest Trust Fund in the UN system in 2004
  - Implemented 180 projects world-wide
  - Assisted Sadako Ogata, Special Advisor for SG
- UN specialist in Japanese Diplomatic Service
  - Led scale of assessment negotiations in 2000
  - G8 Transnational Organized Crime Expert Meetings
  - Policy drafting for TICAD conferences for Africa
- Representative of the Kokuren Forum
  - The biggest Japanese network for global cooperation;
  - Close collaboration with UN and governments



Deloitte Tohmatsu Group (Deloitte Japan) is the name of the Japan member firm group of Deloitte Touche Tohmatsu Limited (DTTL), a UK private company limited by guarantee, which includes Deloitte Touche Tohmatsu LLC, Deloitte Tohmatsu Consulting LLC, Deloitte Tohmatsu Financial Advisory LLC, Deloitte Tohmatsu Tax Co., DT Legal Japan, and all of their respective subsidiaries and affiliates. Deloitte Tohmatsu Group (Deloitte Japan) is among the nation's leading professional services firms and each entity in Deloitte Tohmatsu Group (Deloitte Japan) provides services in accordance with applicable laws and regulations. The services include audit, tax, legal, consulting, and financial advisory services which are delivered to many clients including multinational enterprises and major Japanese business entities through over 9,400 professionals in nearly 40 cities throughout Japan. For more information, please visit the Deloitte Tohmatsu Group (Deloitte Japan)'s website at [www.deloitte.com/jp/en](http://www.deloitte.com/jp/en).

Deloitte provides audit, consulting, financial advisory, risk advisory, tax and related services to public and private clients spanning multiple industries. Deloitte serves four out of five Fortune Global 500® companies through a globally connected network of member firms in more than 150 countries and territories bringing world-class capabilities, insights, and high-quality service to address clients' most complex business challenges. To learn more about how Deloitte's approximately 245,000 professionals make an impact that matters, please connect with us on [Facebook](#), [LinkedIn](#), or [Twitter](#).

Deloitte refers to one or more of Deloitte Touche Tohmatsu Limited, a UK private company limited by guarantee ("DTTL"), its network of member firms, and their related entities. DTTL and each of its member firms are legally separate and independent entities. DTTL (also referred to as "Deloitte Global") does not provide services to clients. Please see [www.deloitte.com/about](http://www.deloitte.com/about) to learn more about our global network of member firms.

This communication contains general information only, and none of Deloitte Touche Tohmatsu Limited, its member firms, or their related entities (collectively, the "Deloitte Network") is, by means of this communication, rendering professional advice or services. Before making any decision or taking any action that may affect your finances or your business, you should consult a qualified professional adviser. No entity in the Deloitte Network shall be responsible for any loss whatsoever sustained by any person who relies on this communication.