

Saving lives & livelihoods

lessons learned from Partners for Resilience



Jane Madgwick, Chief Executive Officer, Wetlands International

WCDDR, Sendai, March 14, 2015



Rising climate and disaster risks

- Climate change
- Population growth
- **Environmental degradation**
- **Skewed development**

...reinforcing each other



Wetlands store and release water



Wetlands increase coastal resilience



Wetland loss - a root cause of increased disaster risk

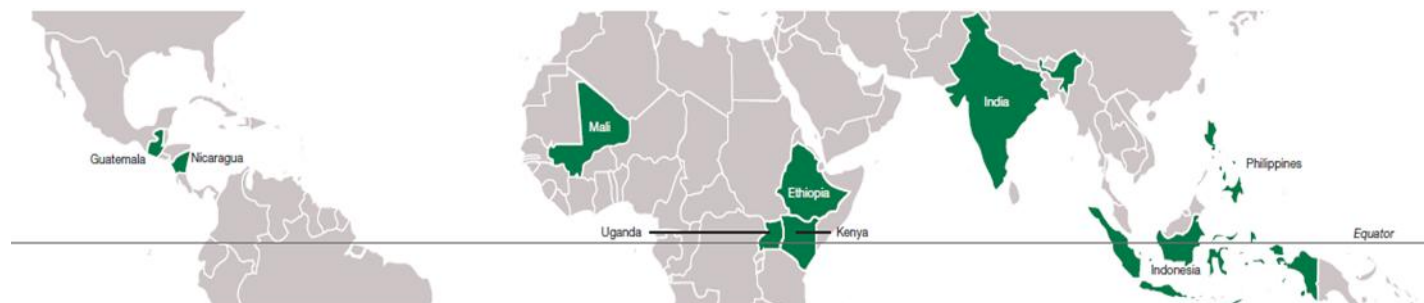
- 90% of hazards are water-related
- 70% loss of wetlands since 1900
- Climate change accentuates impacts



→ **Wetlands are part of the solution**

Eco-smart and climate-smart DRR

Active in 9 countries with 450,000 beneficiaries



PARTNERS FOR RESILIENCE

The Netherlands  Red Cross



Good DRR can save lives even in the most disaster prone places....

Mahanadi Delta, India



...but how to build resilient livelihoods?

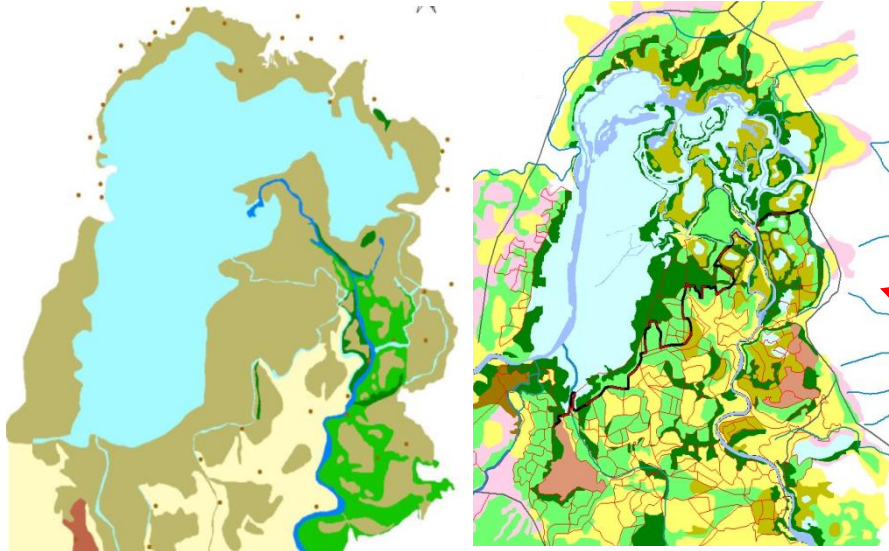


Participatory risk assessment & planning

Risk reduction plans based on understanding of ecosystem, natural hazards and livelihood linkages



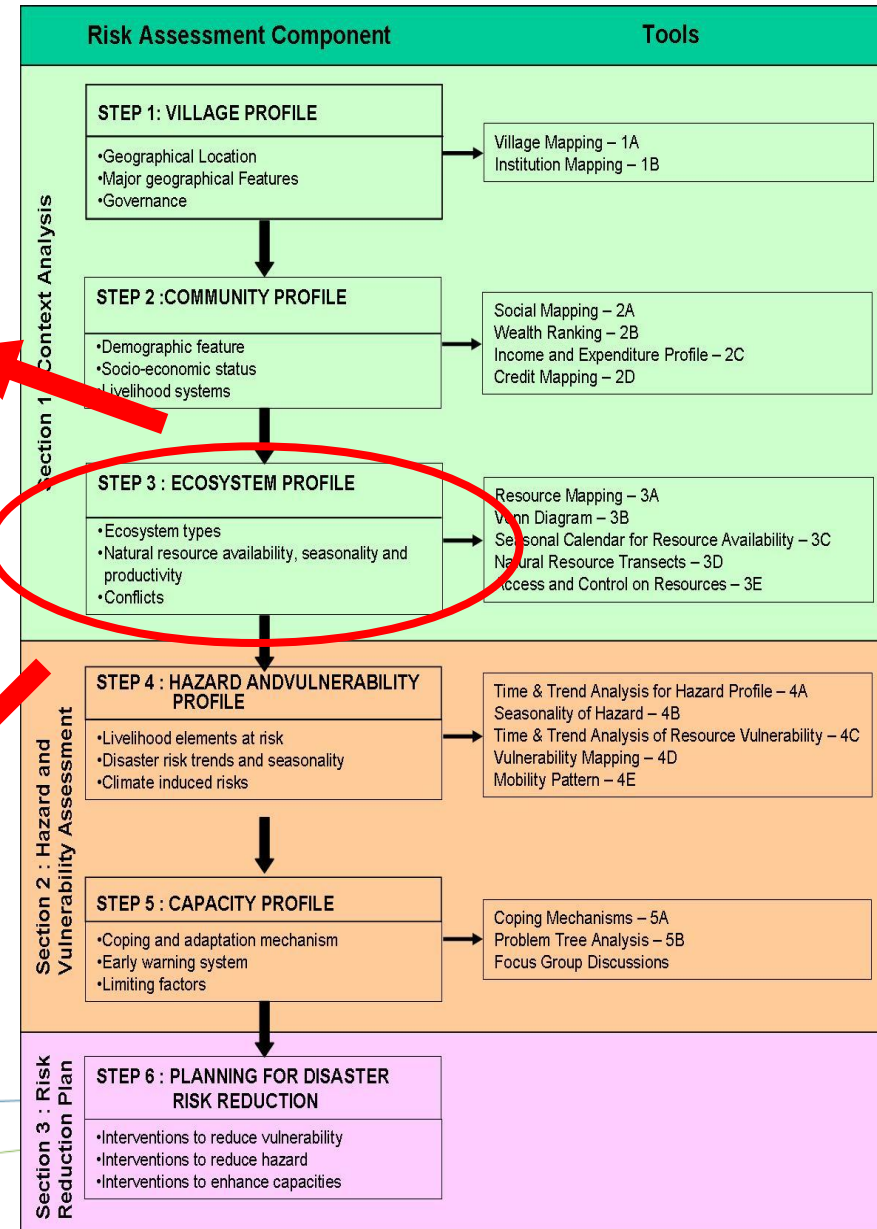
Linking risk assessments



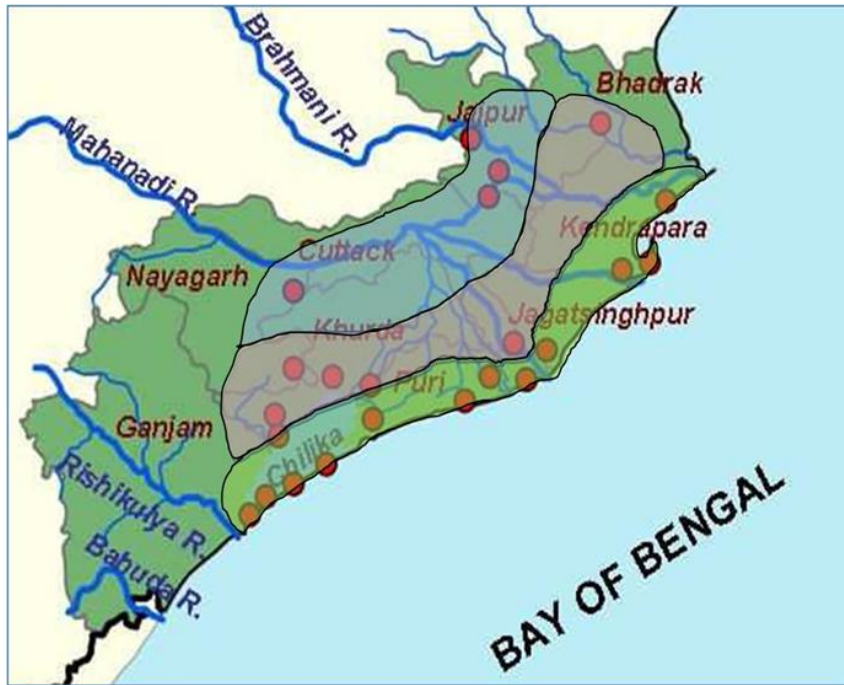
Mapping land-use change



Modeling river flow regimes



Landscape analyses on disaster risk led to community action and influence

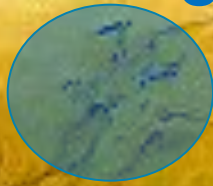


Delta Head Central Delta Coastal





Inner Niger Delta



Business as usual development raises disaster risks

Inner Niger Delta, Mali





Wetlands reduce disaster risks and are the basis for resilient livelihoods



20 years after planting & reflooding



During planting...



Kms of land lost in the last decade

Demak District, Central Java



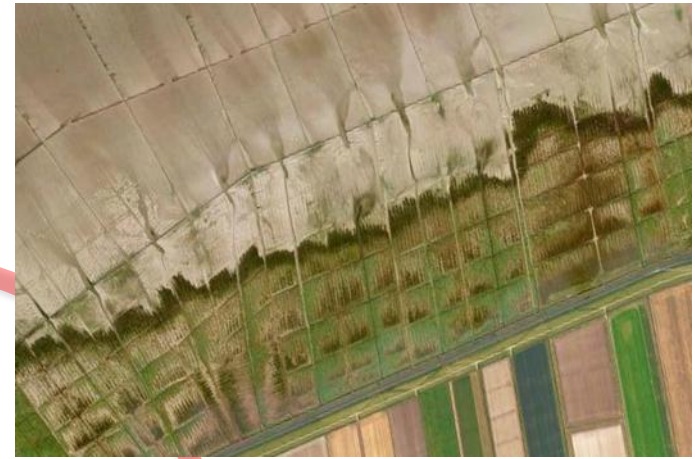
Building with Nature solution



Integrated approach



Restoring mangroves,
also in fish ponds



Smart engineering

Master planning
ICZM

Preparedness &
contingency
planning



Taking it to scale – business cases



Application
Along North Coast &
Jakarta Bay

Upscaling
pilot project
Demak District



Thank you! More information?

Wetlands International: www.wetlands.org/wcdrrsendai

Partners for Resilience www.partnersforresilience.nl

Building with Nature www.ecoshape.nl

Partnership for environment and disaster Risk Reduction:
www.pedrr.org



jane.madgwick@wetlands.org

 [Wetlands International](https://www.facebook.com/WetlandsInternational)

 [@WetlandsInt](https://twitter.com/WetlandsInt)

 [Wetlands International](https://www.linkedin.com/company/WetlandsInternational)

