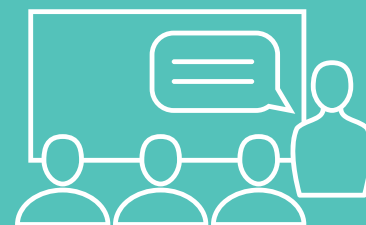




UNITED NATIONS  
UNIVERSITY

**UNU-IIGH**

The UN Thinktank on Global Health



## Strengthening Capacity for Local Decision Making



The United Nations University's International Institute for Global Health (UNU-IIGH) was established in 2005 as part of the UNU system. Its mission is to advance evidence-based policy on key issues related to sustainable development and global health. As a member of the UN family, UNU-IIGH brings an interdisciplinary and intersectoral approach to problem solving.

While the global health effort is led largely from countries and institutions in the Global North, the significant burden of disease and poor health is experienced by populations in the Global South. Proposed solutions and interventions therefore often fail due to inappropriate consideration of local contexts. At the same time, health transcends borders requiring collective action and continual translation of the best evidence to inform action-oriented policy solutions that promote and improve health, reduce health disparities, and protect against global threats.

The **United Nations University (UNU)** is a research and training network, which aims to function as a bridge between the international academic community and the United Nations system, by responding to the pressing global problems of human survival, development and welfare that are of the concern of the United Nations, its Peoples and Member States.

In the face of rapid economic growth from low to middle income status and rapid urbanisation, Malaysia has achieved a highly functioning health system, comprehensive primary health care infrastructure and a convincing report card on the achievement of Universal Health Coverage. UNU-IIGH's decade long partnership with the Malaysian government leverages the country's remarkable progress in improving health outcomes to form a platform for South-South engagement and learning.

The partnership has resulted in the creation of the Malaysian Global Health Consortium, hosted by UNU-IIGH, which brings together policy-makers and researchers from government, civil society and higher education sectors with a collaborative aim to improve global health challenges. Co-designed and co-led by Malaysian institutions, the Consortium produces high-quality knowledge products and flagship training programmes.

The Consortium benefits from the strong engagement of national, regional and global policy-makers, academics and professional associations to tackle health challenges across the Sustainable Development Goals. As a member of the UN family, UNU-IIGH serves as a bridge to leverage this knowledge and skills for the UN system and Member States more broadly - in particular to support capacity building for evidence-based decision-making in low- and middle-income countries.

In the current strategic period, the Malaysian Global Health Consortium, with the support of UNU-IIGH, will expand its network, activities and reach with the aim to serve as a South-South learning hub for global health.

### • Consolidate (2019-2020)

UNU-IIGH will work with its Malaysian partners to consolidate the rich body of evidence that has been generated and distil key learning from the Malaysian health system that can inform policies in other low- and middle-income settings. UNU-IIGH will also support the Consortium to optimise the trainings it offers, including in implementation research, human rights in health, and global health governance, such that Malaysia can serve as a Southern “place-based” learning lab for low- and middle-income countries in the region and globally.

### • Deliver (2021-2023)

With Malaysia as the base, UNU-IIGH will support the Consortium in the roll-out and delivery of trainings and other efforts to strengthen capacity for decision-making in the region and the Global South.



## UNU-IIGH

UNU-IIGH Building  
 UKM Medical Centre,  
 Jalan Yaacob Latif, Bandar Tun  
 Razak, 56000 Cheras  
 Federal Territory of Kuala Lumpur, Malaysia  
 Website: [www.iigh.unu.edu](http://www.iigh.unu.edu)  
 Email: [iigh-info@unu.edu](mailto:iigh-info@unu.edu)

## Malaysian Global Health Consortium

### What is MGHC?

The Malaysian Global Health Consortium (MGHC) is a network that brings together policy-makers and researchers from the government, non-government and higher education sectors to collaborate and contribute to improving global health challenges through training, development of knowledge products, research, service and advocacy. The MGHC is hosted by the United Nations University International Institute for Global Health (UNU-IIGH). With its location in a middle-income country in Asia, it is ideally placed to support South-South models of collaboration and capacity building.

### A Broad Agenda

The Sustainable Development Goals (SDGs) highlight the need for effective engagement across sectors and disciplines. The consortium as a “neutral broker” supports and generates the rigorous evidence and advocacy materials required to address various health priorities, such as preventative and promotive health; social determinants of health; healthy ageing; behaviour change; culture in health and illness; health financing; technology and health; global health diplomacy; and human rights in health. It also offers the opportunity for health policy and research communities to work together with other stakeholders, including communities and the private sector, to address global health challenges.

### Partnership with UNU-IIGH

UNU-IIGH supports the partnership through a range of activities, including by jointly developing knowledge products (textbooks, peer-reviewed manuscripts, policy and evidence briefs), hosting seminars and forums to facilitate networking, serving as a hub for communities of interest and supporting a platform for dialogue and critical thinking. It also hosts fellows and provides early career internships as a means of investing in and growing global health leadership capacity.